



A healthy pig is a happy pig!!!!

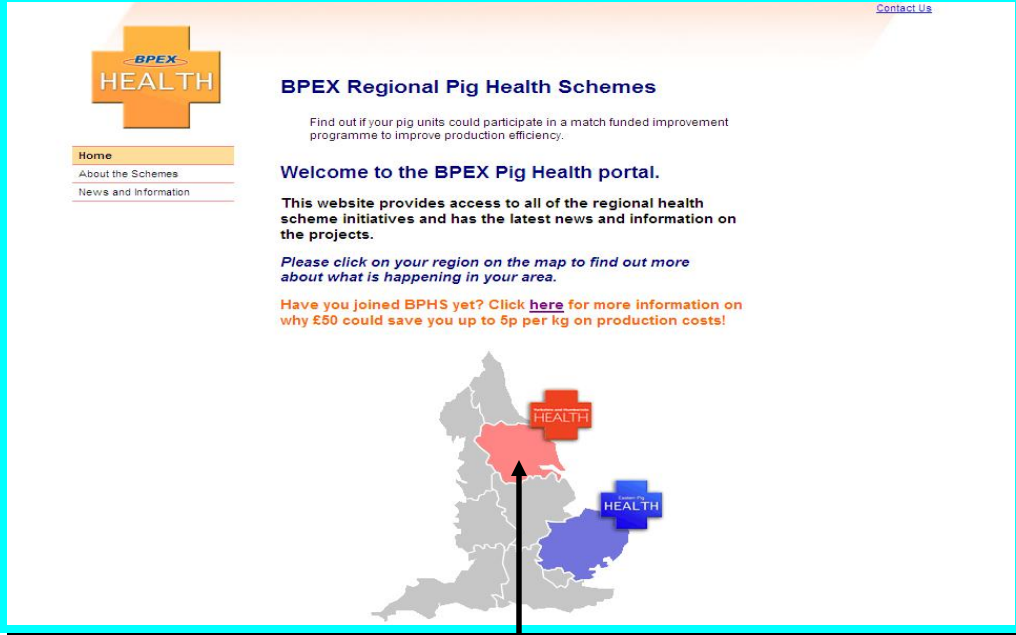
A Producers Guide to the Yorkshire & Humberside Health Website

Funded through the **Rural Development Programme for England**



Step by Step Guide to Registering for Yorkshire & Humberside Health Website

Go to the following website www.pighealth.org.uk
Only use this section if you have never used any BPEX Service before. If you have then please go to the section titled "Logging into Yorkshire and Humberside Health."



The screenshot shows the homepage of the BPEX Regional Pig Health Schemes website. On the left is a navigation menu with links for Home, About the Schemes, and News and Information. The main content area features the BPEX HEALTH logo, a heading for 'BPEX Regional Pig Health Schemes', and a sub-heading 'Welcome to the BPEX Pig Health portal.' Below this is a map of the United Kingdom with Yorkshire and Humberside highlighted in red and blue, and a red arrow pointing to the red region. Text on the page includes: 'Find out if your pig units could participate in a match funded improvement programme to improve production efficiency.', 'This website provides access to all of the regional health scheme initiatives and has the latest news and information on the projects.', 'Please click on your region on the map to find out more about what is happening in your area.', and 'Have you joined BPHS yet? Click here for more information on why £50 could save you up to 5p per kg on production costs!'.


Click on Yorkshire and Humberside Health



The screenshot shows the homepage of the Yorkshire and Humberside Health (YHH) website. On the left is a navigation menu with links for Home, News, Events, Q & As, Decision Tools, Background, Document Library, Swine Dysentery, Sign the Charter, Login Here, Producer Registration, Contact Us, Discussion Area, and Latest YHH Meetings. The main content area features the BPEX logo, the YHH logo, and a heading 'Welcome to Yorkshire and Humberside Health (YHH)'. Below this is a paragraph describing the YHH initiative, a 'BULLETINS' section with a link to the Pig Health Portal, and a section titled 'Working together for improved competitiveness, health and welfare' with a photo of a pig. Text on the page includes: 'The Yorkshire and Humberside Health (YHH) initiative aims to enhance the health status of the Yorkshire and Humberside pig herd by supporting activity and coordination between farmers, veterinarians and the allied industry in order to identify and overcome the key disease challenges in the region. This initiative is being funded by BPEX and the Rural Development Programme for England, which is jointly funded by Defra and the European Union, and is managed by Yorkshire Forward.', 'Click on the link below to be taken to the new Pig Health Portal. It pulls in the latest health and biosecurity news from around the web, giving you a one stop shop to improve your knowledge through articles, videos and interesting snippets. You can even check the weather whilst you're there! Click here to enter the Portal', and 'Are you a member of the BPEX Pig Health Scheme (BPHS)? Specialist pig vets assess the health condition of pig carcasses in the abattoir. By joining, your pigs will be assessed, and you and your vet can use this information to improve your pigs' health and potentially reduce production costs by up to 5p per kg! Membership costs just £50 and new members will get their information backdated to the start of the scheme. For more information click here'.

Click on Producer Registration

Eastern Pig Health | [NPA](#) | [BPEX](#) | [Contact Us](#)



Pig Producer Registration

Assurance Details » Personal Details » Registration Complete

Please register a unit by following the links below. If you are already registered for BPEX services, including ZNCP, please login by going to the [Login here](#) page. If you do not know your username and password please enter your email address in the forgotten password box on the login page and we will send you a **new password and remind you of your username**.

Assurance Scheme Members:
If you are member of a UK assurance scheme please select which one and provide your assurance number.

Assured British Pigs (Certified by CMI, SAI Global and PAI)
 GENESIS QA (Certified by PAI)

Membership Number:

Postcode:

Enter the postcode of the registered primary address for your membership

Unassured Producers:
If you are unassured please select the option below and enter Herdmark or primo slapmark of the unit you would like to register.

Unassured Pig Producer

Herdmark / Primo Site Slap (e.g SM1234):

Postcode:

Enter the postcode of the site you would like to register

Select your certifier and enter your Membership Number followed by Postcode, then click Continue

Eastern Pig Health | [NPA](#) | [BPEX](#) | [Contact Us](#)



Pig Producer Registration

Assurance Details » Personal Details » Registration Complete

Thank you. The details you have entered matched a registered producer. Please provide your contact details so we can setup a user account for you.

Name Forename Surname*

Name

E-Mail*

Company

Address

Postcode*

Phone

Fax

Mobile

Website

Enter your primary contact details and then click continue (This is needed for us to match you to your site in the database)

Yorkshire and Humberside Health for Pig Herds | [NPA](#) | [BPEX](#) | [Contact Us](#)

BPEX

Home
News
Events
Q & As
Decision Tools
Background
Document Library
Swine Dysentery
Sign the Charter
Login Here
Producer Registration
Contact Us
Discussion Area

Pig Producer Registration

Assurance Details » Personal Details » Registration Complete

Thank you. The details you have entered matched a registered producer. Please provide your contact details so we can setup a user account for you.

Registration group does not allow automatic enrollment.

Terms and Conditions

I agree to use my best endeavours to further the aims of Yorkshire and Humber Health by working collaboratively with my fellow members of the pig production and allied industries to enhance the overall health, welfare and sustainability of the sector.

I agree to the Health Data relating to my units being mapped according to the protocols which may be agreed from time to time by the YHH Steering Group. At present this means that density maps relating to Health Status, with a minimum of five units contributing to a density shade on the map, can be displayed online to registered YHH members. It also means that the location of individual production sites, but without identifying ownership, will be visible online to other signed up members of YHH.

I understand that specific protocols relating to aspects such as Membership of Specific Clusters, the Swine Dysentery Charter and enabling my vet to disclose Disease Status are in force and that, as appropriate, I can sign up to these separately.

I further understand and accept that scheme managers of YHH and certain BPEX staff will have access to the Pig Health System data for analytical and management purposes. For a full statement on Permissions Access please visit the YHH website at www.yhh.org.uk.

I understand that by registering I am accepting these Terms and Conditions.

I agree to the terms and conditions

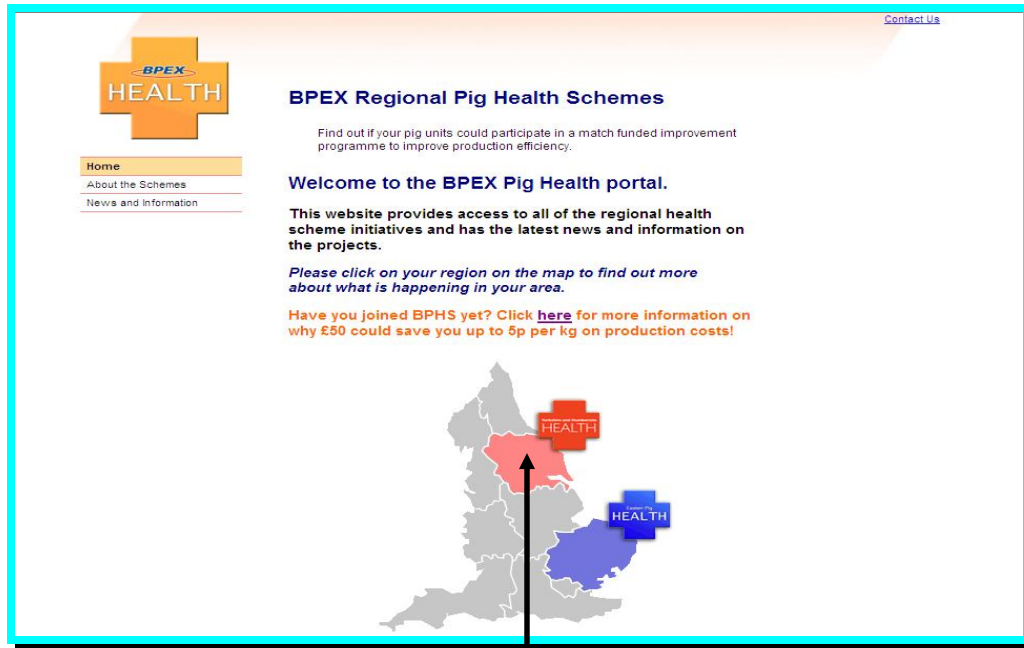
Read and tick the check box, to accept the terms and conditions then click on Continue

In order to use the service you will need to read the terms and conditions. Once your account is approved you will be able to view units across Yorkshire and Humberside.

Registration is now complete. You will receive an email once the registration is approved. Your username and password to access the site will be sent via email.

Logging Into Yorkshire and Humberside Health Website

Go to the following website www.pighealth.org.uk



Click on Yorkshire and Humberside Health



1. Click on Login Here

2. Enter your Username and Password click Log In

Should you use any other BPEX services, such as ZNCP, then use the same details to log into YHH

Should you forget your password, enter your email here and click send to receive another password

Adding Units

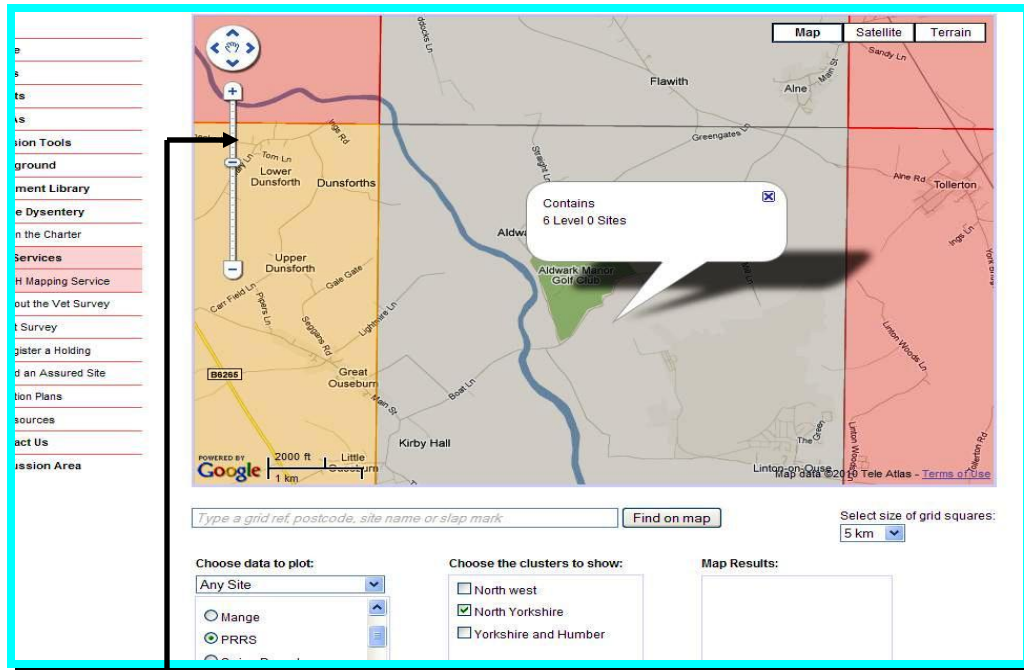
1. To add an additional assured site click here

2. Select the certifier enter Membership Number and Postcode and then submit

Features Available – Mapping

1. Click YHH Mapping Service 2. Select data and cluster

3. Click on any grid to view details



Clicking on the zoom toolbar allows you to view in more detail



Clicking on satellite and zooming in gives an aerial view of unit

Vet Surveys

BPEX

YHH Project - Survey of Pig Units

Please complete a site survey for each of the production units we have registered on the BPEX system for your practice. If we have missed any units or you do not visit a unit please let us know using the tools below.

[Register a Holding](#) [Download your Results](#) [Print Blank Survey](#)

[Download a copy of the producer disclosure form](#)

Name	Address	Number	Postcode
Test farm	123 any town	E000	CV82TL

Test Farm **CV8 2TL** **(YH0000)**

Baseline Vet Survey

Is your practice responsible for this unit?

Yes
 No

Is the unit currently in pig production?

Yes
 No, temporarily out of

Click here to download all your results (optional)

1. Click on Vet Survey

2. Here you can see details of your units

Decision Tools

This feature helps you calculate the financial impact of health interventions at all stages of production.

Yorkshire and Humberside Health for Pig Herds | [NPA](#) | [BPEX](#) | [Contact Us](#) | [Logout](#)

BPEX

Home
News
Events
Q & As
Decision Tools
Background
Document Library
Swine Dysentery
Sign the Charter
YHH Services
YHH Mapping Service
About the Vet Survey
Vet Survey
Register a Holding
Add an Assured Site
Resources
Contact Us
Discussion Area

Decision Tools

In this section, you will find various Decision Tools relevant to Health Management.

You will get more out of the what-if tools and will understand them better if you first view the tutorial. It takes just 4 minutes and all you have to do is sit back and watch while the demonstration is carried out. You can also pause and rewind the demo if you need to see anything again. Follow the link below to see the tutorial.

- [What If Tutorial](#)
Published 25/11/09
- [Depop Calculator](#)
Find out your pay-back time
Published 01/09/09
- [Breeder - Health What If?](#)
Experiment with changes in your sow herd
Published 01/09/09
- [Finisher - Health What If?](#)
Published 24/09/09
- [Piglet - Health What If?](#)
Published 29/09/09
- [Farrow to Finish .. Health What-If?](#)
Published 23/11/09

Clicking on tutorial will show you a four minute online video of the features

Click on Decision Tools

Click on any of the sub headings to provide you with the calculation

Here is an example of the Depopulation Calculator

Worst Case .. Full Depop .. £/sow

Health gain Lost output Gilt litters Contract Rearing Cost Benefit

Max payback period (months)	24
Health gain £/pig	£8
Pigs/sow/yr	22

Total Health Gain £/sow **£352**

0 24
£0 £8
10 22 30

Clicking any tab here provides a calculation for a different scenario

The total figure shows the estimated loss or gain

Moving the markers will amend the figures

Biosecurity Questionnaire

Yorkshire and Humberside Health for Pig Herds | [NPA](#) | [BPEX](#) | [Contact Us](#) | [Logout](#)

BPEX

Home
News
Events
Q & As
Decision Tools
Background
Document Library
Swine Dysentery
Sign the Charter
YHH Services
YHH Mapping Service
About the Vet Survey
Vet Survey
Register a Holding
Add an Assured Site
Resources
Contact Us
Discussion Area

Decision Tools

In this section, you will find various Decision Tools relevant to Health Management.

You will get more out of the what-if tools and will understand them better if you first view the tutorial. It takes just 4 minutes and all you have to do is sit back and watch while the demonstration is carried out. You can also pause and rewind the demo if you need to see anything again. Follow the link below to see the tutorial.

- [What If Tutorial](#)
Published 25/11/09
- [Depop Calculator](#)
Find out your pay-back time
Published 01/09/09
- [Breeder - Health What If?](#)
Experiment with changes in your sow herd
Published 01/09/09
- [Finisher - Health What-If?](#)
Published 24/09/09
- [Piglet - Health What If?](#)
Published 29/09/09
- [Farrow to Finish .. Health What-If?](#)
Published 23/11/09
- [Biosecurity Questionnaire to print](#)
Published 18/11/10

Clicking on Biosecurity Questionnaire to print, opens up a paper version of the questionnaire

BPEX HEALTH

BIOSECURITY QUESTIONNAIRE

Trading Name: _____
 Farm: _____
 CPH Number: _____ Post Code: _____ OS Grid Ref: _____
 ABP Number: _____
 Veterinary Surgeon: _____
 Review Date: _____

	A. PIGS	Answers	Score	Comments
BREEDING				
A1	Do you have breeding pigs on site?	<input type="checkbox"/> Yes <input type="checkbox"/> No	Yes - medium No - high	Yes - go to A2 No - go to A16
A2	How many breeding sows and gilts do you have?	Number	Weighted	Go to A3
A3	Is your herd indoors or outdoors?	<input type="checkbox"/> Indoors <input type="checkbox"/> Outdoors	Indoors - low Outdoors - high	Go to A4
A4	Do you sell replacement breeding stock?	<input type="checkbox"/> Yes <input type="checkbox"/> No	Yes - high No - 0	Go to A5
A5	Do you sell pigs at weaning?	<input type="checkbox"/> Yes <input type="checkbox"/> No	Yes - high No - 0	Go to A6

Here is an example of the paper. A new electronic version will be available soon